

ITEM	QTY.	PART NUMBER	DESCRIPTION
1	1	(SEE CHART)	SHELL WELDMENT
2	S/C	1000412	5TH-TERM. ASS'Y, W/ SCREW
3	S/C	(SEE CHART)	350 SLIDE NUT ASSY
4	2	1000189	WIRE METER SUPPORT
5	2	(SEE CHART)	BLOCK ASSY
6	1	1000101	GROUND CONNECTOR
7	S/C	(SEE CHART)	TRIPLEX/QUADPLEX GND. ASSY
8	1	(SEE CHART)	FRONT ASSEMBLY
9	1	1000193	SCREW, 12-24 x 3/8
10	4	1000060	SCW 10-32 X 5/8 SLT HX WSHR
11	S/C	1154795	LABEL, SMECO
12	S/C	1000166	LABEL, UL METER SOCKET
13	1	1000072	RATING LABEL
14	S/C	1000064	LABEL, DANGER
15	1	1000158	PAD WIREMAN, 8.37 x 7.50
16	2	(SEE CHART)	LABEL, CAT. NO.

SEE SHEET 4 FOR SHELL WELDMENT


SINGLE PACK CARTON: #1005230 1-PER
 MULTI PACK CARTON: #1000195 2-PER
 W/MULTIPACK PAD #1000187 (1) PER CARTON

ITEM	QTY.	DESCRIPTION
A	6	3/4, 1, 1-1/4, 1-1/2, 2, 2-1/2 CONC. K.O.
B	1	1/4, 1/2 CONC. K.O.
C	1	1/4" SOLID K.O.
D	7	UL MOUNTING EMBOSS

NOTES:

- 1.) SEE SHEET 2 FOR COMMON PREFIX / SUFFIX OPTIONS.
- 2.) FOR LABELING LOCATIONS SEE DRAWING 1096668.
- 3.) FOR FIELD INSTALLED 5TH TERMINAL ORDER CATALOG # K5T.
- 4.) FOR ADDITIONAL CATALOG NUMBERS, SPECIAL NOTES, SUFFIX -N (#), AND ADDITIONAL UTILITY SUFFIXES AND SPECIFICATIONS, SEE PAGE 3
- 5.) FOR ALUMINUM VERSIONS SEE DRAWING #7040-3.
- 6.) WHEN SOLD WITH "R" PREFIX, UNIT TO BE SINGLE PACKED IN CARTON #1005230 WITH CARTON LABEL SPECIFIED IN RETAIL LABEL CHART.

REV.	DATE	DESCRIPTION	ECO No.	BY
O9	6/22/18	CHART -CPSB SUFFIX; ADD PEL NOTE	038948	KSP
O10	10/15/20	SEPARATE U7040-XL-TG-5T-HSP TO OWN DRAWING; PICTORIAL UPDATE	046372	AJH
O11	02/16/22	SEPARATE U7040-XL-TG-OS-COL AND R7040-XL-TG-OS-COL TO OWN DRAWING	049864	DSW

Material:	16 GA. GALV. STEEL	 <p>KANSAS CITY, MO USA</p>		
Shear/Die No.:				
Finish:	MILBANK LIGHT GRAY			
Part Wt.:	11.221 LBS. EA.			
Square Inches:		Title:	200A 600VAC 4-TERMINAL RL OH/UG METER SOCKET	
Tolerances:	Unless Specified Otherwise X.X ±.1 X.XX ±.03 X.XXX ±.015 X" ±2"	Third Angle	Catalog No.:	PREFIX 7040-()
Scale:	NTS	Checked By:	Customer:	MILBANK STD.
Drawn By:	SJG	Approved By:	Drawing No.:	7040
			Date:	3-8-07
			Sheet:	1 of 4

SUFFIX	DEFINITION
-RL	SMALL HUB OPENING
-XL	SMALL CLOSING PLATE
-O	BLANK TOP
-WL	1" HUB
-YL	1-1/4" HUB
-ZL	1-1/2" HUB
-DL	2" HUB
-EL	2-1/2" HUB
-DTL	(2) 2" HUBS
-KK	K-K BYPASS
-TG	TRIPLEX GND.
-QG	QUADPLEX GND.
-BL	BARREL LOCK
-BLG	BARREL LOCK GUARD
-HSP	STAINLESS STEEL LATCH HASP
-IL	INNER-TITE LOCK
-OS	OUT OF SERVICE DEVICE
-5T	5TH TERMINAL
-FS	FLASH SHIELD
-WT	WATER TAP
-ALT	ALLIANT

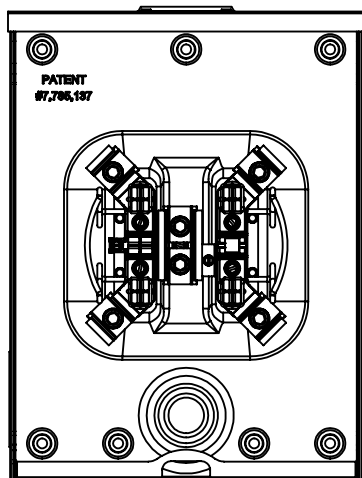
BLOCK ASSY CONFIGURATION					
SUFFIX	BLOCK ASSY	NUT ASSY	-TG	-OS	-5T
NONE	1000107 (2)	1000414 (6)	N/A	N/A	N/A
-TG	1000107 (2)	1000414 (6)	1000394 (1)	N/A	N/A
-KK	1000108 (2)	1000414 (6)	N/A	N/A	N/A
-QG	1000107 (2)	1000414 (6)	1000394 (2)	N/A	N/A
-OS	1000107 (2)	1000414 (6)	N/A	1027464 (1)	N/A
-TG-OS	1000107 (2)	1000414 (6)	1000394 (1)	1027464 (1)	N/A
-KK-OS	1000108 (2)	1000414 (6)	N/A	1027464 (1)	N/A
-TG-KK	1000108 (2)	1000414 (6)	1000394 (1)	N/A	N/A
-QG-KK	1000108 (2)	1000414 (6)	1000394 (2)	N/A	N/A
-TG-5T	1000107 (2)	1000414 (6)	1000394 (1)	N/A	1000412 (1)
-WT	1107532 (1) / 1107533 (1)	1000414 (2)	1000394 (1)	N/A	N/A
-TG-KK-OS	1000108 (2)	1000414 (6)	1000394 (1)	1027464 (1)	N/A
-KK-5T	1000108 (2)	1000414 (6)	N/A	N/A	1000412 (1)
-TG-KK-5T	1000108 (2)	1000414 (6)	1000394 (1)	N/A	1000412 (1)
-FS	INSTALL FLASH SHIELD 1000359				

PREFIX	DEFINITION	LBL #1000166 QTY.
U	UL LISTED	1
S	NON-UL LISTED	0
R	RETAIL (SEE SHEET 3)	1

SUFFIX	NOTE
-PEL	PACK 2-1/2" HUB (1002449) INSIDE METER SOCKET ENCLOSURE.

SUFFIX	1000064 QTY.
NONE	1
-DPL	0
-ENT	0
-PEP	0


FRONT SUFFIX CHART	
SUFFIX	FRONT ASS'Y
NONE	1127865 (SC)
-PL / -BLG	1129581 (SC)
-IL	1129587 (SC)
-IL-OPPD	1129595 (SC)
-TRP	1129596 (SC)
-SYEMC	1129597 (SC)
-OEC	1129598 (SC)
-SEC	1129599 (SC)
-GPL	1129601 (SC)
-DIV	1129602 (SC)
-BPUB	1129603 (SC)
-BL	1129722 (SC)
-BL-BTES	1129841 (SC)
-BL-BVUB	1129842 (SC)
-ACPW	1130693 (SC)
-PEC	1165693 (SC)
-RGE	1127865 (SC)
-CPSB	1202822 (SC)



SUFFIX	STAMP CAT. NO.	LABEL CAT. NO.	QTY
NONE	YES	N/A	N/A
-O-TG-HSP	NO	1000335	2
-XL-TG-HSP	NO	1005237	2
-XL-TG-KK-ALT	NO	1132055	1
-XL-TG-OS-COL	NO	N/A	N/A
-RL-TG-KK-RGE	NO	1000334	1

SUFFIX	1154795 QTY.
NONE	N/A
-XL-KK-SMECO	1

REV.	DATE	DESCRIPTION	ECO No.	BY
O9	6/22/18	CHART -CPSB SUFFIX; ADD PEL NOTE	038948	KSP
O10	10/15/20	SEPARATE U7040-XL-TG-5T-HSP TO OWN DRAWING; PICTORIAL UPDATE	046372	AJH
O11	02/16/22	SEPARATE U7040-XL-TG-OS-COL AND R7040-XL-TG-OS-COL TO OWN DRAWING	049864	DSW


Material:	16 GA. GALV. STEEL		 <p>KANSAS CITY, MO USA</p>
Shear/Die No.:			
Finish:	MILBANK LIGHT GRAY		
Part Wt.:	11.221	LBS. EA.	
Square Inches:			Title: 200A 600VAC 4-TERMINAL RL OH/UG METER SOCKET
Tolerances:	Unless Specified Otherwise X.X ±.1 X.XX ±.03 X.XXX ±.015 X" ±2"		Catalog No.: PREFIX 7040-()
Scale:	NTS	Checked By:	Customer: MILBANK STD.
Drawn By:	SJG	Approved By:	Drawing No.: 7040
Date:	3-8-07	Sheet:	2 of 4

SPECIAL SUFFIX CHART		
SUFFIX	CUSTOMER	DESCRIPTION
-AEP	AEP	SUFFIX WAS ADDED TO CATALOG NO. FOR SALES AND PRODUCTION. HAS NO SPECIAL REQUIREMENTS
-ACPW	ACWORTH POWER	FRONT SAME AS #1127864 EXCEPT FOR CUSTOMER STAMP.
-ALT	ALLIANT	REPLACE CATALOG STAMP WITH LABEL #1132055 (U7040-XL-TG-KK-ALT)
-BRY	CITY OF BRYAN TEXAS	SPECIAL BTU NUMBER E-M45 TO BE ON CARTON LABEL
-CIN	CINN. GAS & ELEC. CO.	INSTALL LABEL #1105887 ONLY, WILL REPLACE LABEL #1000045
-CLE	CLECO	SPECIAL LABELING SUPPLY (1) CLECO LBL ONLY #704179-MO ON OUTSIDE OF FRONT
-COL	CITY OF LAKELAND	CATALOG NUMBER NOT TO BE STAMPED ON THE SOCKET, IT SHOULD ONLY BE PRINTED ON THE CARTON LABEL
-CPSB	SAN ANTONIO	APPLY LABEL 1128667 ON LOC. D.
-DLC	DUQUESNE LIGHT	1.) ALL CONNECTORS TO BE PLATED WITH ALNOX INHIBITOR INSTALLED 2.) STAMP 'U-200' ON BOTTOM OF SOCKET AND ON CARTON 3.) INSTALL LABEL #1025240 (1) LOC. "D" SEE DWG #1096668 4.) FOR FIELD MOUNTED INSULATED NEUTRAL ORDER CAT. #K3077
-DPC	DUKE POWER CO.	SUPPLY (2) LABEL #1025344, (1) LOC. "A" OUTSIDE, (1) LOC. "E" INSIDE.
-DPL	DELMARVA POWER & LIGHT	1.) ALL CONNECTORS TO BE PLATED WITH ALNOX INHIBITOR INSTALLED 2.) INSTALL (1) LBL #1000066 ON OUTSIDE LOWER LEFT CORNER OF FRONT 3.) DO NOT SUPPLY LABEL #1000064 ON FRONTS.
-DTE	DETROIT EDISON	ADD LABEL #1135427 LOC. B (U7040-RL-TG-DTE)
E	CONSIGNED STOCK	SUPPLY EXT. HEX NUT ASSYS #1001340 (6) IN PLACE OF INT. HEX NUT ASSYS ON BLOCK ASSEMBLY CHART
-ENT	ENTERGY	DO NOT SUPPLY WARNING LABEL #1000064
-EMG	TM SALES	UNITS ARE FOR EMERGENCY STOCK.
-FPC	FLORIDA POWER CORP.	1.) CONNECTORS TO BE PLATED WITH INHIBITOR INSTALLED. 2.) STAMP METER SOCKET BACK WITH INDELIBLE INK STAMP (FLORIDA POWER CORP.) LOC. "B" SEE DWG. #1096668 3.) SPECIAL LABELING SUPPLY U/L RATING LABEL ONLY #1000050 (1) LOC. B SEE DWG. #1096668 4.) FPC STOCK #001-366 IS CAT.#S8841-O-TG-PL-FPC 5.) FPC STOCK #001-341 IS CAT.#S8841-RL-TG-PL-FPC 6.) FRONT TO HAVE -PL-FPC SUFFIX
-HS	CPL	SUPPLY WITH STAINLESS STEEL HUB SCREWS #1005200 (4).
-IN		INHIBITOR INSTALLED IN CONNECTORS
-LI	LONG ISLAND	1.) SUPPLY (1) CAT. NO. LABEL #705287-MO ON INSIDE OF M/S (LOC. "B"), AND (1) ON UPPER RIGHT CORNER OF FRONT. 2.) SPECIAL LABELING SUPPLY (1) WARNING LABEL #1025314 ON INSIDE OF
-OUC	O.U.C.	1.) STAMP INSIDE OF BACK WITH INDELIBLE INK, 3/4" TALL LETTERS "OUC" (LOC. D). 2.) PALLET TO BE NO LARGER THAN 40".
-PEP	PEPCO	1.) ALL CONNECTORS TO BE PLATED WITH ALNOX INHIBITOR INSTALLED. 2.) INSTALL (1) LABEL #1173166 ON OUTSIDE LOWER LEFT OF FRONT. 3.) DO NOT SUPPLY LABEL #1000064 ON FRONTS.
-RGE	ROCHESTER GAS AND ELECTRIC	REPLACE CATALOG STAMP WITH LABEL #1000334.
-N4	NORTHWEST FLORIDA	SPECIAL LABELING SUPPLY U/L RATING LABEL ONLY #1000072 (1) (LOC. B) SEE DWG #1096668
-N10		ALL CONNECTORS TO BE PLATED WITH INHIBITOR INSTALLED.
-N12	CITY OF GAINSVILLE	1.) SPECIAL LABELING SUPPLY (1) #704988-MO. (LOC. E) 2.) SPECIAL LABELING SUPPLY U/L RTG LBL ONLY #1000072 (1) (LOC. B) SEE #1096668 3.) CANNOT BE SOLD AS U/L.

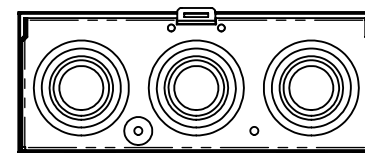
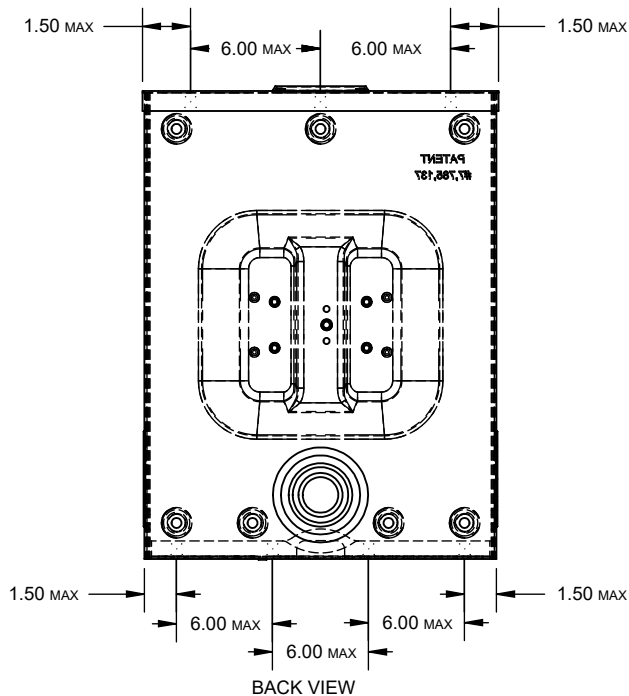
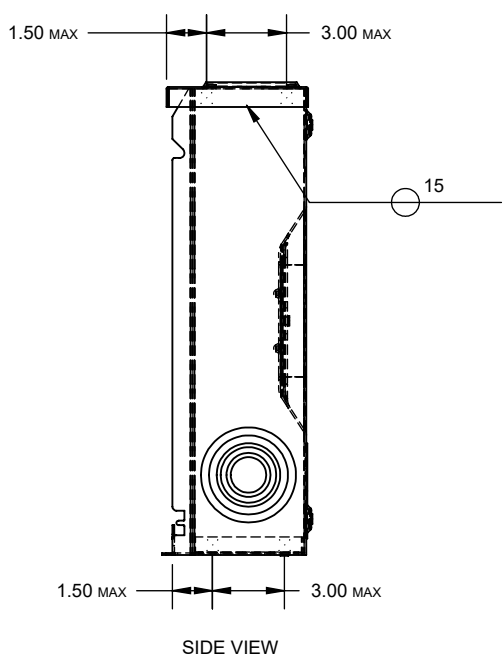
RETAIL LABEL CHART	
CATALOG NUMBER	LABEL NO.
R1773-XL-TG-KK	1130737
R7040-DL	1134604
R7040-DL-TG-KK	1131786
R7040-O-TG	1130743
R7040-O-TG-HSP	1131226
R7040-O-TG-KK	1131516
R7040-RL-KK-DPL	1131225
R7040-RL-TG	1130580
R7040-RL-TG-KK	1130581
R7040-RL-TG-KK-AEP	1130582
R7040-RL-TG-KK-RGE	1130744
R7040-XL-QG-KK	1131517
R7040-XL-TG	1130583
R7040-XL-TG-HSP	1130584
R7040-XL-TG-IL	1131537
R7040-XL-TG-KK	1130585
R7040-XL-TG-OS-COL	1130588
R7528-RL-TG	1131037
R7040-XL-TG-PEC	1168722
R7040-RL-KK-PEP	1173729
R7040-RL-TG-KK-BLG	1176886
R7040-RL-TG-KK-BLG-AEP	1176887

ADDITIONAL CAT. NOS.	
1773	
1917	
3170	-N4
3934	-N12
7528	
9014	


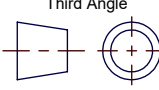
REV.	DATE	DESCRIPTION	ECO No.	BY
O9	6/22/18	CHART -CPSB SUFFIX; ADD PEL NOTE	038948	KSP
O10	10/15/20	SEPARATE U7040-XL-TG-5T-HSP TO OWN DRAWING; PICTORIAL UPDATE	046372	AJH
O11	02/16/22	SEPARATE U7040-XL-TG-OS-COL AND R7040-XL-TG-OS-COL TO OWN DRAWING	049864	DSW

Material:		 <p>KANSAS CITY, MO USA</p>
Shear/Die No.:		
Finish:		
Part Wt.:	LBS. EA.	
Square Inches:		Title:
Tolerances: Unless Specified Otherwise X.X ±.1 X.XX ±.03 X.XXX ±.015 X* ±2*	Third Angle	Catalog No.:
Scale: NTS	Checked By:	Customer:
Drawn By: SJG	Approved By:	Drawing No.:
		Date: 3-8-07
		Sheet: 3 of 4

ENCLOSURE CONFIGURATION					
CATALOG NUMBER SUFFIX	TOP	BACK	BOTTOM	BARREL LOCK ANGLE	SHELL WELDMENT
-()	1000203	1127075	1000234	-	1127868
-O	1000209	1127075	1000234	-	1127882
-()-HSP	SEE WELDMENT DRAWING				1129704
-O-HSP	1000209	1127075	1000401	-	1127883
-RL-BL	1000203	1127075	1000238	1000104	1127884
-RL-BLG	1000203	1127075	1000238	1000085	1127885
-DTL	1112772	1127075	1000234	-	1127886
-PEC	1000203	1165689	1000234	-	1165690



REV.	DATE	DESCRIPTION	ECO No.	BY
O9	6/22/18	CHART -CPSB SUFFIX; ADD PEL NOTE	038948	KSP
O10	10/15/20	SEPARATE U7040-XL-TG-5T-HSP TO OWN DRAWING; PICTORIAL UPDATE	046372	AJH
O11	02/16/22	SEPARATE U7040-XL-TG-OS-COL AND R7040-XL-TG-OS-COL TO OWN DRAWING	049864	DSW

Material:	16 GA. GALV. STEEL		 <p>KANSAS CITY, MO USA</p>
Shear/Die No.:			
Finish:	MILBANK LIGHT GRAY		
Part Wt.:	6.644	LBS. EA.	
Square Inches:			Title:
Tolerances: Unless Specified Otherwise X.X ±.1 X.XX ±.03 X.XXX ±.015 X" ±2"			Catalog No.:
Third Angle 			Customer:
Scale:	NTS	Checked By:	Drawing No.:
Drawn By:	SJG	Approved By:	Date:
		Date:	3-8-07
		Sheet:	4 of 4